

# CR1/3N

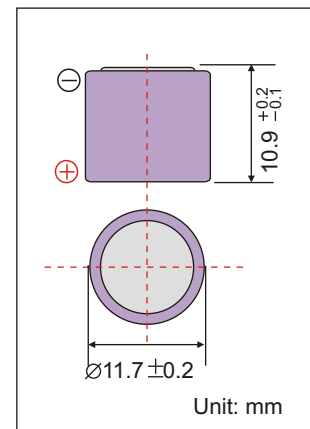
## Brief Datasheet

### Lithium Manganese Dioxide Battery

#### 1 BASIC SPECIFICATION

(Typical values relative to cells stored for one year or less at + 30 °C max.)

Nominal capacity ( at 3mA, +23 °C) * <sup>1</sup>	170mAh
Nominal voltage	3.0V
Standard discharge current	3mA
Maximum continuous current	60mA
Maximum pulse current * <sup>2</sup>	140mA
Operating temperature range * <sup>3</sup>	-40 °C- +60 °C
Storage temperature (recommended )	+30 °C Max
Weight	3.0g



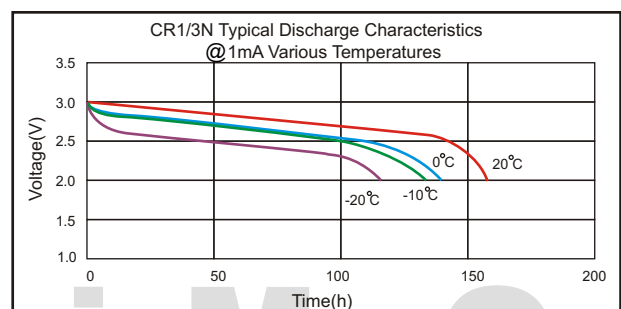
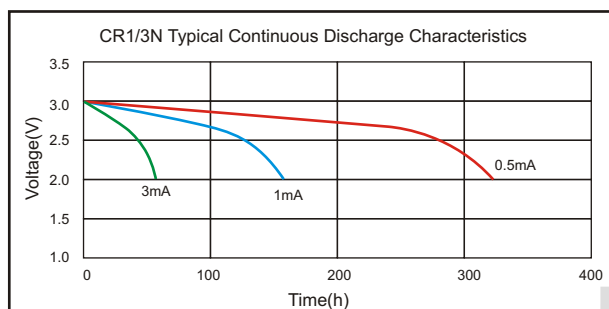
Note:

- \*<sup>1</sup> At 1mA discharge current to 2.0V cut-off, +23 °C. The capacity restored by the cell varies according to current drain, temperature and cut-off.
- \*<sup>2</sup> The readings may vary according to the pulse characteristics, the temperature, and the cell's previous history.
- \*<sup>3</sup> Operation above ambient temperature range may lead to reduced capacity and lower voltage readings at the beginning of pulses. Consult EEMB.

#### 2 MAIN FEATURES

- Best suit for high current discharge for both continuous and pulse current.
- Light Weight, High Voltage and High Energy Density.
- Excellent Stable Discharge Characteristics and Outstanding Temperature Characteristics.
- Excellent Leakage Resistance and Excellent Long-term Reliability.

#### 3 ELECTRICAL CHARACTERISTICS



Note: Any representations in this brochure concerning performance, are for informational purposes only and are not construed as warranties either expressed or implied, of future performance.